



FEATURES

- Investment Cast Body Construction
- Valve Design as per API 600 & BS1868
- Swing Type Design
- Bolted Bonnet Design
- Full enclosed Gasket
- Standard in Trim#8 ; Other Trim Materials are available upon request
- NACE MR0175 is available upon request
- Super Alloy materials for highly corrosive medium are available upon request

SPECIFICATIONS

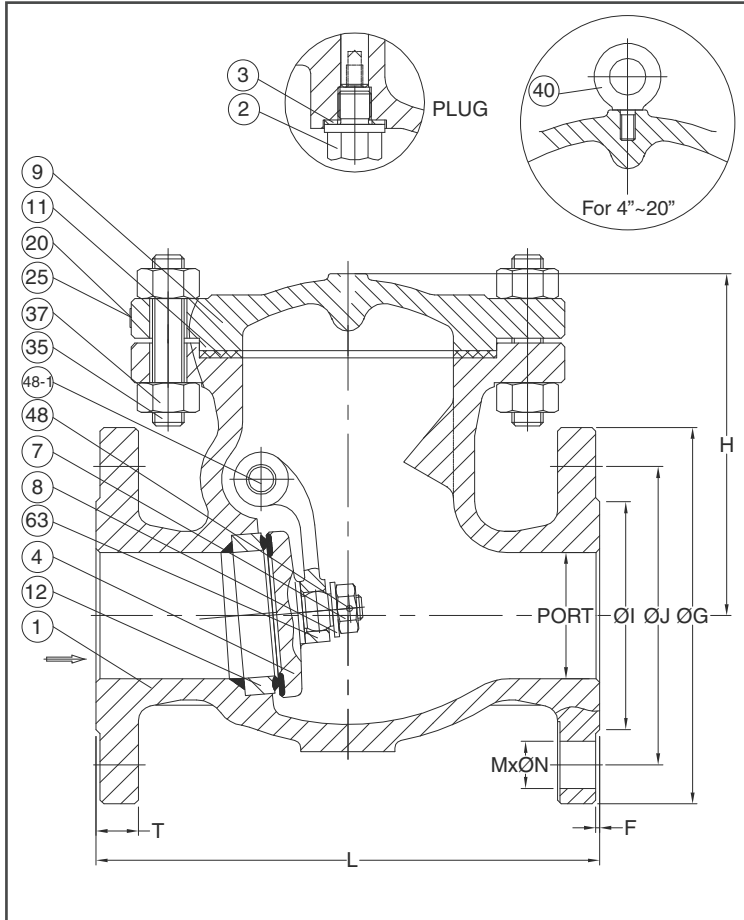
- Size Range 2" ~ 20" (DN50 ~ DN500)
- End Connection Flanged End, RF
- Working Pressure CF8M - 275 PSI (CWP)
WCB - 285 PSI (CWP)

STANDARDS

- Design ASME/ANSI B16.34 / API 600 / BS1868
- Face to Face ASME/ANSI B16.10 Class 150
- Flange Dimension ASME/ANSI B16.5 Class 150 RF
- Material ASTM
- Pressure Testing API 598

CERTIFICATE

- Quality Assurance ISO 9001
- Material Certificate EN 10204-3.1 MTR
- CE Approval PED 97/23/EC Module H
- Canadian Certificate CRN



MATERIAL LIST			Trim#8	DIMENSION								unit : mm		
NO.	PART NAME	MATERIAL (more options available)		SIZE	PORT	L	H _(Close)	ØG	ØJ	ØI	T	F	M x ØN	
1	BODY	ASTM A216 Gr.WCB		DN50	2"	51.0	203.0	137.0	152.0	120.5	92.0	16.0	1.6	4 x Ø19.0
2	PLUG	ASTM A276 TYPE 410		DN80	3"	76.0	241.0	161.0	190.0	152.5	127.0	19.0	1.6	4 x Ø19.0
3	PLUG SEAL	ASTM A276 TYPE 304		DN100	4"	102.0	292.0	229.0	229.0	190.5	157.0	24.0	1.6	8 x Ø19.0
4	DISC	ASTM A216 Gr.WCB + 13Cr.		DN150	6"	152.0	356.0	273.0	279.0	241.5	216.0	26.0	1.6	8 x Ø22.0
7	DISC NUT	ASTM A276 TYPE 410		DN200	8"	203.0	495.0	334.0	343.0	298.5	270.0	29.0	1.6	8 x Ø22.0
8	DISC WASHER	ASTM A276 TYPE 410												
9	BONNET	ASTM A216 Gr.WCB												
11	GASKET	SS304 + GRAPHITE (SPW)												
12	SEAT RING	ASTM A105 + STELLITE#6												
20	RIVET	SS304												
25	NAME PLATE	SS304												
35	BODY BOLT (STUD)	ASTM A193 Gr.B7												
37	STUD BOLT NUT	ASTM A194 Gr.2H												
40	EYE BOLT	CARBON STEEL												
48	DISC NUT PIN	ASTM A276 TYPE 410												
48-1	DISC PIN	ASTM A182 Gr.F6A												
63	HINGE	ASTM A216 Gr.WCB												

DIMENSION								unit : inch		
SIZE	PORT	L	H _(Close)	ØG	ØJ	ØI	T	F	M x ØN	
DN50	2"	2.01	7.99	5.39	5.98	4.74	3.62	0.63	0.06	4 x Ø0.75
DN80	3"	2.99	9.49	6.34	7.48	6.00	5.00	0.75	0.06	4 x Ø0.75
DN100	4"	4.02	11.50	9.02	9.02	7.50	6.18	0.94	0.06	8 x Ø0.75
DN150	6"	5.98	14.02	10.75	10.98	9.51	8.50	1.02	0.06	8 x Ø0.87
DN200	8"	7.99	19.49	13.15	13.50	11.75	10.63	1.14	0.06	8 x Ø0.87



FEATURES

- Investment Cast Body Construction
- Valve Design as per API 600 & BS1868
- Swing Type Design
- Bolted Bonnet Design
- Full enclosed Gasket
- Standard in Trim#8 ; Other Trim Materials are available upon request
- NACE MR0175 is available upon request
- Super Alloy materials for highly corrosive medium are available upon request

SPECIFICATIONS

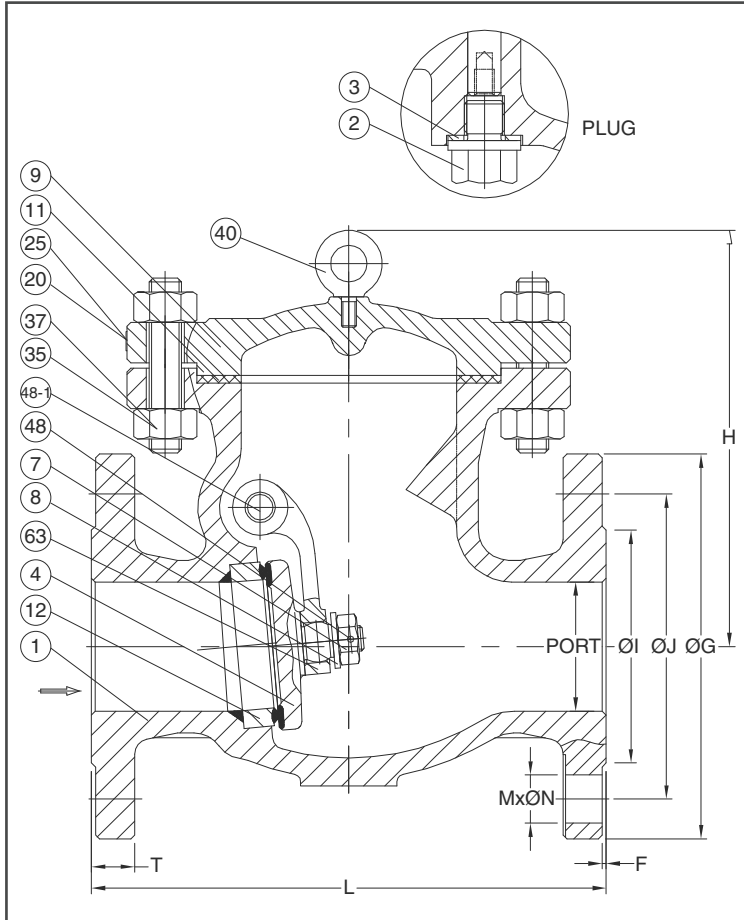
- Size Range 2" ~ 20" (DN50 ~ DN500)
- End Connection Flanged End, RF
- Working Pressure CF8M - 275 PSI (CWP)
WCB - 285 PSI (CWP)

STANDARDS

- Design ASME/ANSI B16.34 / API 600 / BS1868
- Face to Face ASME/ANSI B16.10 Class 150
- Flange Dimension ASME/ANSI B16.5 Class 150 RF
- Material ASTM
- Pressure Testing API 598

CERTIFICATE

- Quality Assurance ISO 9001
- Material Certificate EN 10204-3.1 MTR
- CE Approval PED 97/23/EC Module H
- Canadian Certificate CRN



MATERIAL LIST			Trim#8	DIMENSION									unit : mm	
NO.	PART NAME	MATERIAL (more options available)		SIZE	PORT	L	H _(Close)	ØG	ØJ	ØI	T	F	M x ØN	
1	BODY	ASTM A216 Gr.WCB		DN250	10"	254.0	622.0	403.0	406.0	362.0	324.0	31.0	1.6	12 x Ø25.0
2	PLUG	ASTM A276 TYPE 410		DN300	12"	305.0	698.0	471.0	483.0	432.0	381.0	32.0	1.6	12 x Ø25.0
3	PLUG SEAL	ASTM A276 TYPE 304		DN350	14"	337.0	787.0	510.0	533.0	476.0	413.0	35.0	1.6	12 x Ø29.0
4	DISC	ASTM A216 Gr.WCB + 13Cr.		DN400	16"	387.0	864.0	578.0	597.0	540.0	470.0	37.0	1.6	16 x Ø29.0
7	DISC NUT	ASTM A276 TYPE 410		DN450	18"	438.0	978.0	604.0	635.0	578.0	533.0	40.0	1.6	16 x Ø32.0
8	DISC WASHER	ASTM A276 TYPE 410		DN500	20"	489.0	978.0	624.0	699.0	635.0	584.0	43.0	1.6	20 x Ø32.0
9	BONNET	ASTM A216 Gr.WCB												
11	GASKET	SS304 + GRAPHITE (SPW)												
12	SEAT RING	ASTM A105 + STELLITE#6												
20	RIVET	SS304												
25	NAME PLATE	SS304												
35	BODY BOLT (STUD)	ASTM A193 Gr.B7												
37	STUD BOLT NUT	ASTM A194 Gr.2H												
40	EYE BOLT	CARBON STEEL												
48	DISC NUT PIN	ASTM A276 TYPE 410												
48-1	DISC PIN	ASTM A182 Gr.F6A												
63	HINGE	ASTM A216 Gr.WCB		DN500	20"	19.25	38.50	24.57	27.52	25.00	22.99	1.69	0.06	20 x Ø1.26

DIMENSION												unit : inch
SIZE	PORT	L	H _(Close)	ØG	ØJ	ØI	T	F	M x ØN			
DN250	10"	10.00	24.49	15.87	15.98	14.25	12.76	1.22	0.06	12 x Ø0.98		
DN300	12"	12.01	27.48	18.54	19.02	17.01	15.00	1.26	0.06	12 x Ø0.98		
DN350	14"	13.27	30.98	20.08	20.98	18.74	16.26	1.38	0.06	12 x Ø1.14		
DN400	16"	15.24	34.02	22.76	23.50	21.26	18.50	1.46	0.06	16 x Ø1.14		
DN450	18"	17.24	38.50	23.78	25.00	22.76	20.98	1.57	0.06	16 x Ø1.26		
DN500	20"	19.25	38.50	24.57	27.52	25.00	22.99	1.69	0.06	20 x Ø1.26		