

FEATURES

- Investment Cast Body Construction
- 1 Piece Body Design
- ISO 5211 Mounting Flange
- Blow-Out-Proof Stem Design
- Anti-Static Device
- Available for Pneumatic or Electric Actuator
- Super Alloy materials for highly corrosive medium are available upon request

AUTOMATION AVAILABLE

SPECIFICATIONS

- Size Range: 1/2" ~ 6" (DN15 ~ DN150)
- End Connection: Flanged End, RF
- Working Pressure: CF8M - 275 PSI (CWP)
WCB - 285 PSI (CWP)
- Steam Pressure: 150 PSIG. Saturated Steam for RTFE.
- Temperature Range: -4 to 356 °F (-20 to 180 °C) for RTFE.

STANDARDS

- Design: ASME/ANSI B16.34
- Mounting Flange: ISO 5211
- Face to Face: ASME/ANSI B16.10 Class 150
- Flange Dimension: ASME/ANSI B16.5 Class 150 RF
- Material: ASTM
- Pressure Testing: API 598

CERTIFICATE

- Fire Safe **OPTION**: API 607 4th Edition
- Quality Assurance: ISO 9001
- Material Certificate: EN 10204-3.1 MTR
- CE Approval: PED 97/23/EC Module H
- Canadian Certificate: CRN

MATERIAL LIST

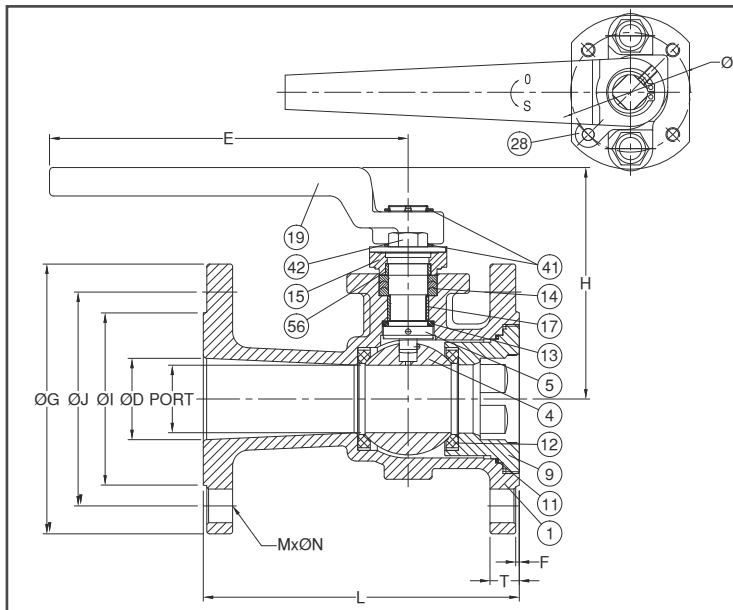
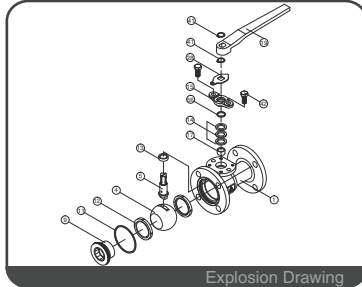
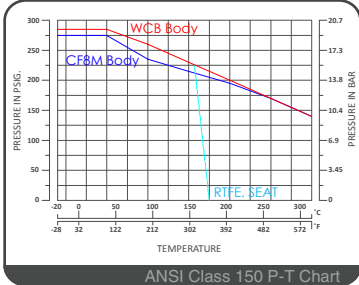
| NO. | PART NAME | MATERIAL (more options available) |
|-----|---------------|--|
| 1 | BODY | ASTM A351 Gr.CF8M ASTM A216 Gr.WCB |
| 4 | BALL | ASTM A351 Gr.CF8M |
| 5 | STEM | ASTM A276 Gr.SS316 |
| 9 | END CAP | ASTM A351 Gr.CF8M ASTM A216 Gr.WCB |
| 11 | BODY SEAL | PTFE. |
| 12 | SEAT | RTFE.(15%G.F.) |
| 13 | THRUST WASHER | PTFE. |
| 14 | STEM PACKING | PTFE. |
| 15 | GLAND FLANGE | ASTM A351 Gr.CF8 |
| 17 | STEM BUSH | PTFE. |
| 19 | HANDLE | FCD 45 |
| 28 | STOP PLATE | SS304 |
| 41 | SNAP RING | SS304 |
| 42 | GLAND BOLT | SS304 |
| 56 | GLAND BEARING | PTFE. |

DIMENSION

| | | | | | | | | | | | | | | unit : mm | | |
|------|--------|------|-----|-------|-------|-------|-------|-------|------|-----|----|------|----|-----------|------|--|
| SIZE | PORT | L | E | H | ØG | ØJ | ØI | T | F | M | ØN | ØK | ØD | | | |
| DN15 | 1/2" | 12.5 | 108 | 129.5 | 70.1 | 89.0 | 60.5 | 35.0 | 11.2 | 2.0 | 4 | 16.0 | 36 | F03 | 15.0 | |
| DN20 | 3/4" | 16.0 | 117 | 129.5 | 70.5 | 98.0 | 70.0 | 43.0 | 12.7 | 2.0 | 4 | 16.0 | 36 | F03 | 20.0 | |
| DN25 | 1" | 20.0 | 127 | 130.8 | 79.9 | 108.0 | 79.5 | 51.0 | 12.0 | 2.0 | 4 | 16.0 | 42 | F04 | 25.0 | |
| DN40 | 1-1/2" | 32.5 | 165 | 163.0 | 96.0 | 127.0 | 98.5 | 73.0 | 14.8 | 2.0 | 4 | 16.0 | 50 | F05 | 38.0 | |
| DN50 | 2" | 38.0 | 178 | 202.0 | 130.4 | 152.0 | 120.5 | 97.0 | 16.5 | 2.0 | 4 | 19.0 | 70 | F07 | 46.0 | |
| DN65 | 2-1/2" | 50.0 | 190 | 202.0 | 137.9 | 178.0 | 139.5 | 105.0 | 18.0 | 2.0 | 4 | 19.0 | 70 | F07 | 65.0 | |

DIMENSION

| | | | | | | | | | | | | | | unit : inch | | |
|------|--------|------|------|------|------|------|------|------|------|------|----|------|------|-------------|------|--|
| SIZE | PORT | L | E | H | ØG | ØJ | ØI | T | F | M | ØN | ØK | ØD | | | |
| DN15 | 1/2" | 0.49 | 4.25 | 5.09 | 2.75 | 3.50 | 2.38 | 1.37 | 0.44 | 0.07 | 4 | 0.62 | 1.41 | F03 | 0.59 | |
| DN20 | 3/4" | 0.62 | 4.60 | 5.09 | 2.77 | 3.85 | 2.75 | 1.69 | 0.50 | 0.07 | 4 | 0.62 | 1.41 | F03 | 0.78 | |
| DN25 | 1" | 0.78 | 5.00 | 5.14 | 3.14 | 4.25 | 3.12 | 2.00 | 0.47 | 0.07 | 4 | 0.62 | 1.65 | F04 | 0.98 | |
| DN40 | 1-1/2" | 1.27 | 6.49 | 6.41 | 3.77 | 5.00 | 3.87 | 2.87 | 0.58 | 0.07 | 4 | 0.62 | 1.96 | F05 | 1.49 | |
| DN50 | 2" | 1.49 | 7.00 | 7.95 | 5.13 | 5.98 | 4.74 | 3.81 | 0.64 | 0.07 | 4 | 0.74 | 2.75 | F07 | 1.81 | |
| DN65 | 2-1/2" | 1.96 | 7.48 | 7.95 | 5.42 | 7.00 | 5.49 | 4.13 | 0.70 | 0.07 | 4 | 0.74 | 2.75 | F07 | 2.55 | |



FEATURES

- Investment Cast Body Construction
- 1 Piece Body Design
- ISO 5211 Mounting Flange
- Blow-Out-Proof Stem Design
- Anti-Static Device
- Available for Pneumatic or Electric Actuator
- Super Alloy materials for highly corrosive medium are available upon request

AUTOMATION AVAILABLE

SPECIFICATIONS

- Size Range: 1/2" ~ 6" (DN15 ~ DN150)
- End Connection: Flanged End, RF
- Working Pressure: CF8M - 275 PSI (CWP)
WCB - 285 PSI (CWP)
- Steam Pressure: 150 PSIG. Saturated Steam for RTFE.
- Temperature Range: -4 to 356 °F (-20 to 180 °C) for RTFE.

STANDARDS

- Design: ASME/ANSI B16.34
- Mounting Flange: ISO 5211
- Face to Face: ASME/ANSI B16.10 Class 150
- Flange Dimension: ASME/ANSI B16.5 Class 150 RF
- Material: ASTM
- Pressure Testing: API 598

CERTIFICATE

- Fire Safe **OPTION**: API 607 4th Edition
- Quality Assurance: ISO 9001
- Material Certificate: EN 10204-3.1 MTR
- CE Approval: PED 97/23/EC Module H
- Canadian Certificate: CRN

MATERIAL LIST

| NO. | PART NAME | MATERIAL (more options available) |
|-----|---------------|--|
| 1 | BODY | ASTM A351 Gr.CF8M ASTM A216 Gr.WCB |
| 4 | BALL | ASTM A351 Gr.CF8M |
| 5 | STEM | ASTM A276 Gr.SS316 |
| 9 | END CAP | ASTM A351 Gr.CF8M ASTM A216 Gr.WCB |
| 11 | BODY SEAL | PTFE. |
| 12 | SEAT | RTFE.(15%G.F.) |
| 13 | THRUST WASHER | PTFE. |
| 14 | STEM PACKING | PTFE. |
| 15 | GLAND FLANGE | ASTM A351 Gr.CF8 |
| 17 | STEM BUSH | PTFE. |
| 19 | HANDLE | FCD 45 |
| 28 | STOP PLATE | SS304 |
| 41 | SNAP RING | SS304 |
| 42 | GLAND BOLT | SS304 |
| 56 | GLAND BEARING | PTFE. |

DIMENSION

| SIZE | | PORT | L | E | H | ØG | ØJ | ØI | T | F | M | ØN | ØK | ØD |
|-------|----|-------|-----|-------|-------|-----|-------|-----|------|-----|---|----|-----|---------|
| DN80 | 3" | 58.0 | 203 | 323.5 | 159.3 | 190 | 152.5 | 127 | 19.5 | 2.0 | 4 | 19 | 102 | F10 78 |
| DN100 | 4" | 80.0 | 229 | 323.5 | 182.3 | 229 | 190.5 | 163 | 24.3 | 2.0 | 8 | 19 | 102 | F10 95 |
| DN150 | 6" | 115.0 | 267 | 752.5 | 241.6 | 279 | 241.5 | 216 | 25.4 | 2.0 | 8 | 22 | 125 | F12 150 |

DIMENSION

| SIZE | | PORT | L | E | H | ØG | ØJ | ØI | T | F | M | ØN | ØK | ØD |
|-------|----|------|-------|-------|------|-------|------|------|------|------|---|------|------|----------|
| DN80 | 3" | 2.28 | 7.99 | 12.73 | 6.27 | 7.48 | 6.00 | 5.00 | 0.76 | 0.07 | 4 | 0.74 | 4.01 | F10 3.07 |
| DN100 | 4" | 3.14 | 9.01 | 12.73 | 7.17 | 9.01 | 7.50 | 6.41 | 0.95 | 0.07 | 8 | 0.74 | 4.01 | F10 3.74 |
| DN150 | 6" | 4.52 | 10.51 | 29.62 | 9.51 | 10.98 | 9.50 | 8.50 | 1.00 | 0.07 | 8 | 0.86 | 4.92 | F12 5.90 |